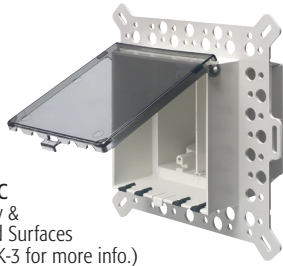
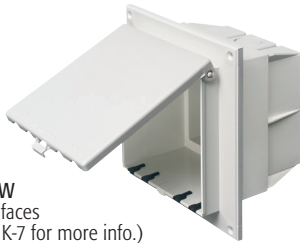


## Two-Gang, Low Profile IN BOX™

IN BOX™



**DBVM2C**  
Masonry &  
Textured Surfaces  
(See p. K-3 for more info.)



**DBVR2W**  
Flat Surfaces  
(See p. K-7 for more info.)



**DBVS2C**  
Vinyl Siding  
(See p. K-2 for more info.)

Two-gang, recessed electrical box with weatherproof-in-use extra-duty cover for flat surfaces, masonry, retrofit, and siding construction (see below for product use). Non-metallic cover and base. Installs two outlets or combo devices. Box and white cover are textured/ paintable. UV rated plastic for long outdoor life.

### FEATURES AND BENEFITS

- IN BOX's one-piece assembly replaces the installation of an electrical box and bubble cover assembly
- Installs in the wall, so less of it shows outside
- No gaskets required
- For flat surfaces, vinyl siding, stucco over masonry or wood (with or without lath), and retrofit
- Install an outlet and a switch, or two switches in one location
- Includes 1/2" and 3/4" NM cable connectors and a two-gang rectangular device plate

CATALOG NUMBER	UPC/DCI/NAED MFG #018997	DESCRIPTION/COVER COLOR	UNIT PKG	STD PKG	DIM A	DIM B	DIM C	DIM D	DIM E
DBVM2C	03962	2-Gang, Vertical/Clear	1	4	9.058	8.992	5.142	1.919	3.223
DBVM2W	03963	2-Gang, Vertical/White	1	4	9.058	8.992	5.142	1.919	3.223
DBVR2C	03964	2-Gang, Vertical/Clear	1	4	7.159	6.888	5.142	1.295	3.847
DBVR2W	03965	2-Gang, Vertical/White	1	4	7.159	6.888	5.142	1.295	3.847
DBVS2C	03960	2-Gang, Vertical/Clear	1	4	9.058	8.992	5.142	2.263	2.879
DBVS2W	03961	2-Gang, Vertical/White	1	4	9.058	8.992	5.142	2.263	2.879

Add suffix "GC" to Catalog # when ordering in Canada, for example DBVM2CGC.

2-Gang, replacement covers available on page K-17.

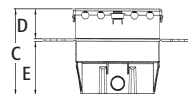
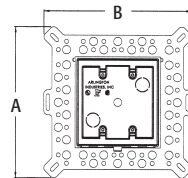
**PATENTED. ADDITIONAL PATENTS PENDING.**

Note: Meets 2015 CEC (Rule 26-702), NEMA 3R, 2017 NEC 406.9 (b); Where a weatherproof-in-use cover is required for 15 or 20 AMP receptacles installed outdoors.

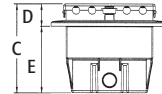
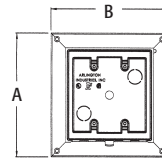


**WEATHERPROOF-IN-USE**

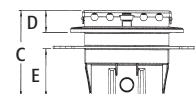
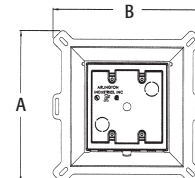
**EXTRA-DUTY**



DBVM2  
34.0 cu. in.



DBVR2  
34.0 cu. in.



DBVS2  
34.0 cu. in.

### Two-Gang In Box includes...

Box with weatherproof-in-use extra-duty cover; installed bug plugs; (1) decorator wall plate; and (2) NM cable connectors. DBVM2 also includes a block bushing with washer; and an in-place, disposable mud cover. DBVR2 also includes (1) set installation screws; and (1) roll of caulk. DBVS2 also includes (1) set installation screws.

Scan For Video



Bug Plugs ship installed in all IN BOX styles to seal unused cord hole openings.



Completed installation, DBVS2C shown.